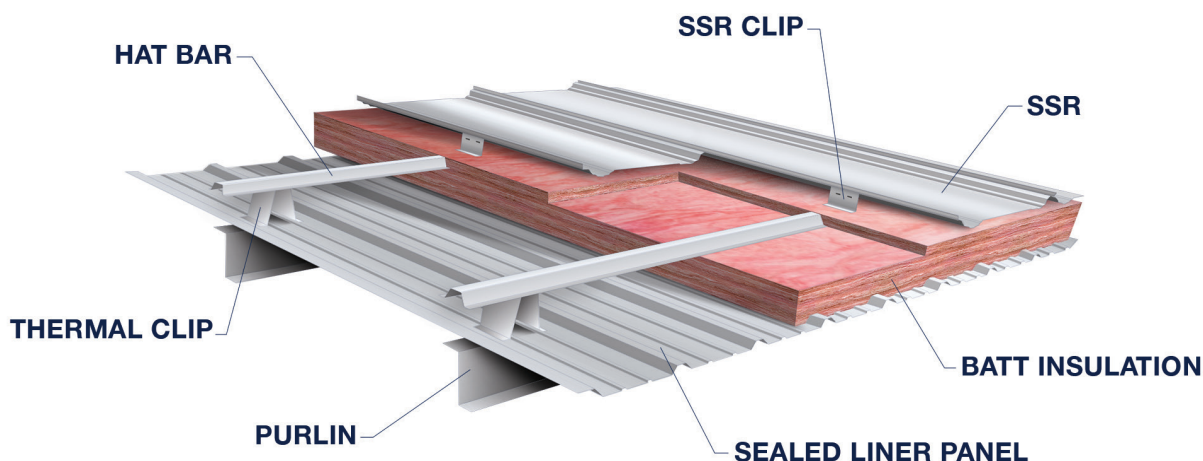




AGRICULTURAL | AVIATION | EQUESTRIAN | SELF STORAGE | WAREHOUSES | WORKSHOPS



# THERMAL GUARD ROOF THERMAL SYSTEM WITH LINER



## FEATURES

- Flexibility to meet energy codes,
- Steel Liner panel that acts as integral vapour barrier,
- Steel liner available in Galvalume or range of colours to provide attractive clean finish to the roof,
- Steel liner provides strong protection to insulation system,
- Cost effective to install and maintain,
- Installs above secondary so easy to install,
- Well-suited for installation with cold-formed purlins, steel joists or other framing.

## BENEFITS

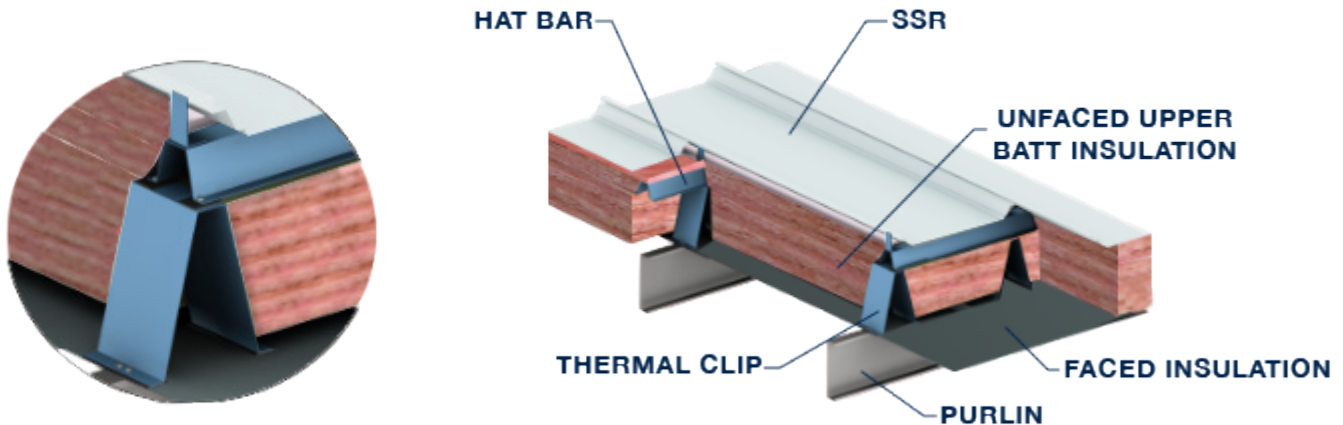
- High thermal performance for heat and cold for compliance with applicable energy codes,
- Clean overhead appearance,
- Ease of installation and durability saves on initial construction and long-term maintenance,
- Long-term weather protection backed by warranties.

Thermal Cavity	Batt Insulation	Effective U-Value	Effective R-Value
10"	R28 + R10	0.037	26.9
10"	R28 + R20	0.031	32.0
12"	R30 + R10	0.035	28.5
12"	R30 + R20	0.029	34.2
14"	R28 + R13 + R10	0.029	34.3
14"	R28 + R13 + R20	0.025	39.4

\* 1" thermal block R=5.0 between clips, MBI R=3.33/in

# Thermal System Economy

## Thermal System without Liner



### FEATURES

- Flexibility to meet energy codes,
- Cost effective to install and maintain,
- Installs above secondary and insulation does not extend into purlin cavity,
- Well-suited for installation with cold-formed purlins, steel joists or other framing.

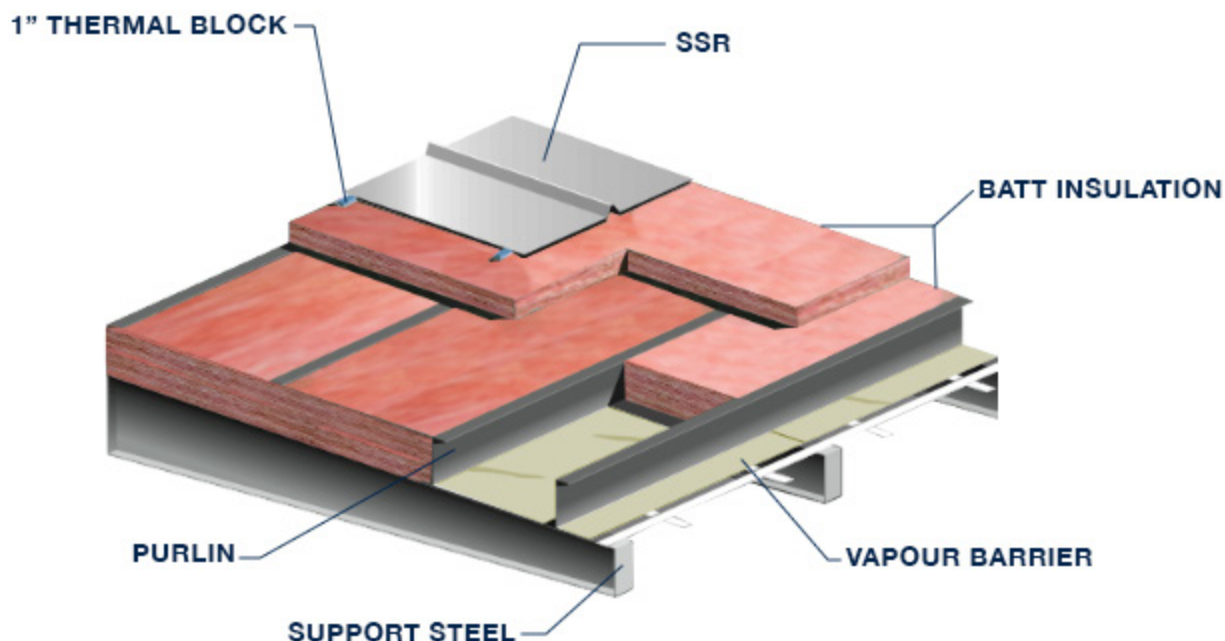
### BENEFITS

- High thermal performance for heat and cold for compliance with applicable energy codes,
- Clean overhead appearance,
- Ease of installation saves on initial construction and long-term maintenance,
- Long-term weather protection backed by warranties.

Thermal Cavity	Batt Insulation	Effective U-Value	Effective R-Value
10"	R28 + R10	0.037	27.1
10"	R28 + R20	0.031	32.2
12"	R30 + R10	0.035	28.5
12"	R30 + R20	0.029	34.1
14"	R28 + R13 + R10	0.029	34.3
14"	R28 + R13 + R20	0.025	39.7

\* 1" thermal block R=5.0 between clips, MBI R=3.33/in

# Cavity Fill Insulation System: Liner or Vapour Barrier under Purlins



## FEATURES

- Flexibility to meet energy codes,
- Cost effective to install and maintain,
- Insulations fills purlin cavity taking advantage of wasted space,
- Well-suited for installation with cold-formed purlins,
- Clean finish on underside of the roof members.

## BENEFITS

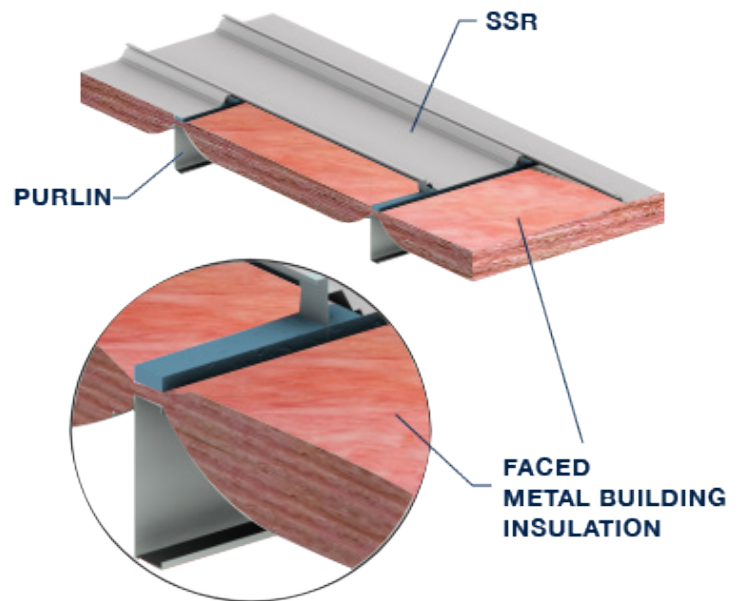
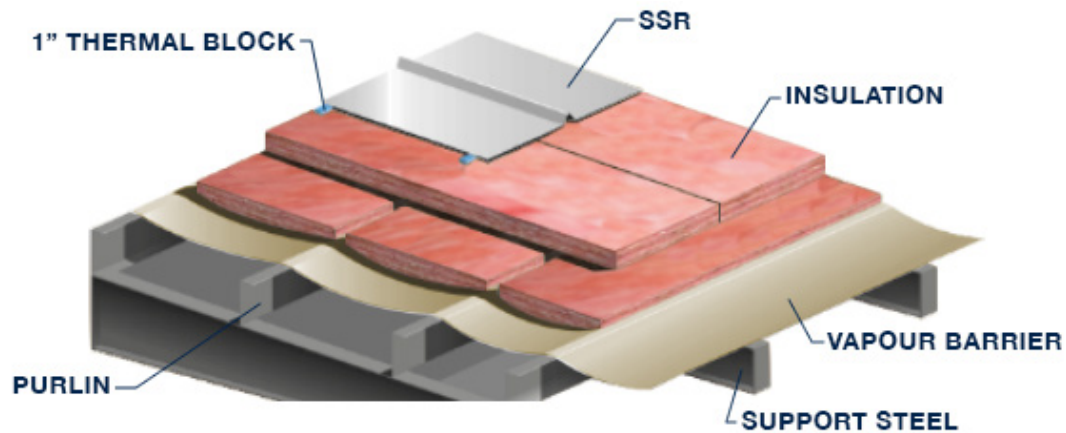
- High thermal performance for heat and cold for compliance with applicable energy codes,
- Durability of the roof finish,
- Long-term weather protection backed by warranties.

Thermal Cavity	Batt Insulation	Effective U-Value	Effective R-Value
8"	R28 + R10	0.036	27.8
8"	R28 + R20	0.027	37.0
10"	R30 + R10	0.034	29.5
10"	R30 + R20	0.026	38.7
12"	R28 + R13 + R10	0.030	33.5
12"	R28 + R13 + R20	0.023	43.0

\* 1" thermal block R=5.0 between clips, MBI R=3.33/in



# DRAPED INSULATION SYSTEM



## FEATURES

- Cost effective to install,
- Can use multiple layers to achieve desired insulation,
- Well-suited for installation with cold-formed purlins.

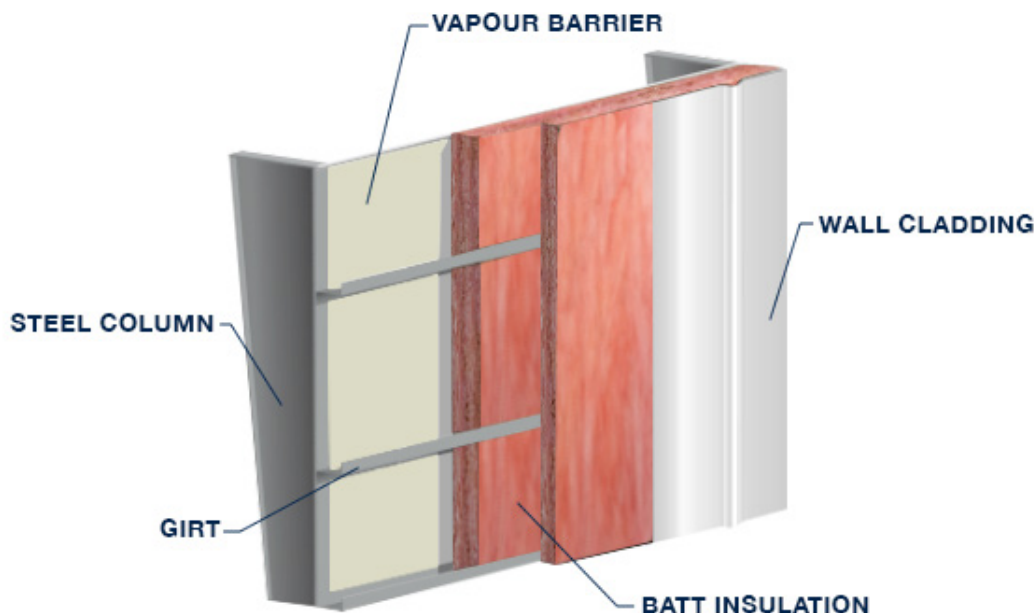
## BENEFITS

- Simple to install,
- Clean overhead appearance,
- Long-term weather protection backed by warranties.

Description	Batt Insulation	Effective U-Value	Effective R-Value
Single batt + Block	R19	0.065	15.4
Double layer + Block between clips	R20 + R12	0.0465	21.8
Double layer + Block under clip	R20 + R20	0.031	31.5
Double layer + Block under clip	R28 + R20	0.028	36.2

\* 1" thermal block R=5.0 between clips, MBI R=3.33/in

# Cavity Fill Wall Insulation System: Liner or Vapour Barrier Inside Girt Face



## FEATURES

- Flexibility to meet energy codes,
- Cost effective to install and maintain,
- Insulations fills girt cavity taking advantage of wasted space,
- Well-suited for installation with cold-formed purlins,
- Clean finish on inside wall face.

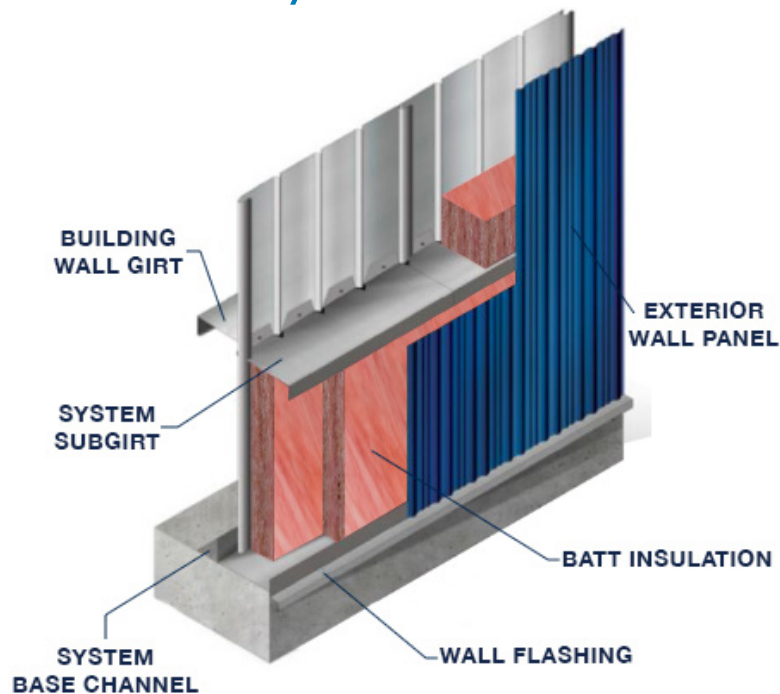
## BENEFITS

- High thermal performance for heat and cold for compliance with applicable energy codes,
- Durability of the wall finish,
- Long-term weather protection backed by warranties.

Girt Spacing	Thermal Cavity	Batt Insulation	Effective U-Value	Effective R-Value
4 ft.	8"	R28 infill only	0.052	19.3
	8"	R28 infill + R13 pinch	0.040	25.2
	8"	R30 infill + R20 pinch	0.035	28.7
	10"	R30 infill only	0.048	20.9
	10"	R30 infill + R13 pinch	0.037	26.7
	10"	R30 infill + R20 pinch	0.033	30.3
R 5.0 1" block	Adjustment		$U = 1/R$	Add +1.4

\* With 1" thermal BlockR=5.0, MBI R=3.33/in

# VapourGuard Wall Thermal System with Liner



## FEATURES

- Flexibility to meet energy codes,
- Steel Liner panel that acts as integral vapour barrier,
- Steel liner available Galvalume or range of colours to provide attractive clean finish to the wall, Steel liner provides strong protection to insulation system,
- Cost effective to install and maintain,
- Installs above secondary so easy to install,
- Well-suited for installation with cold-formed, steel channels or other framing.

## BENEFITS

- High thermal performance for heat and cold for compliance with applicable energy codes,
- Clean wall appearance,
- Ease of installation and durability saves on initial construction and long-term maintenance,
- Long-term weather protection backed by warranties.

Thermal Cavity	Batt Insulation	Effective U-Value	Effective R-Value
6"	R25	0.044	22.5
7"	R29	0.039	25.7
8"	R34	0.035	28.4
4" Thermal Clip + 2" hat	R25	0.040	24.8

\* MBI R=4.2/in



**HEAD OFFICE**

Box 1416

Winkler, Manitoba R6W 4B4 Canada

E: [info@ubuildsb.com](mailto:info@ubuildsb.com)

T: +1-855-385-4295

F: +1-204-325-4365

[www.ubuildsb.com](http://www.ubuildsb.com)

